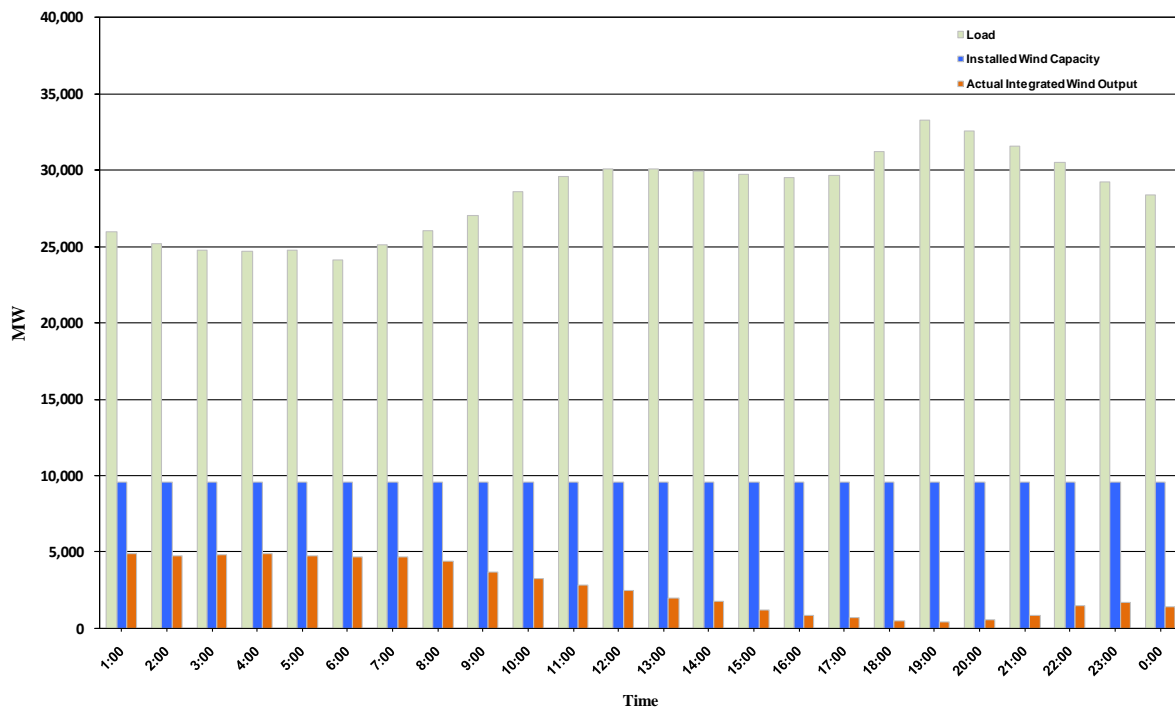




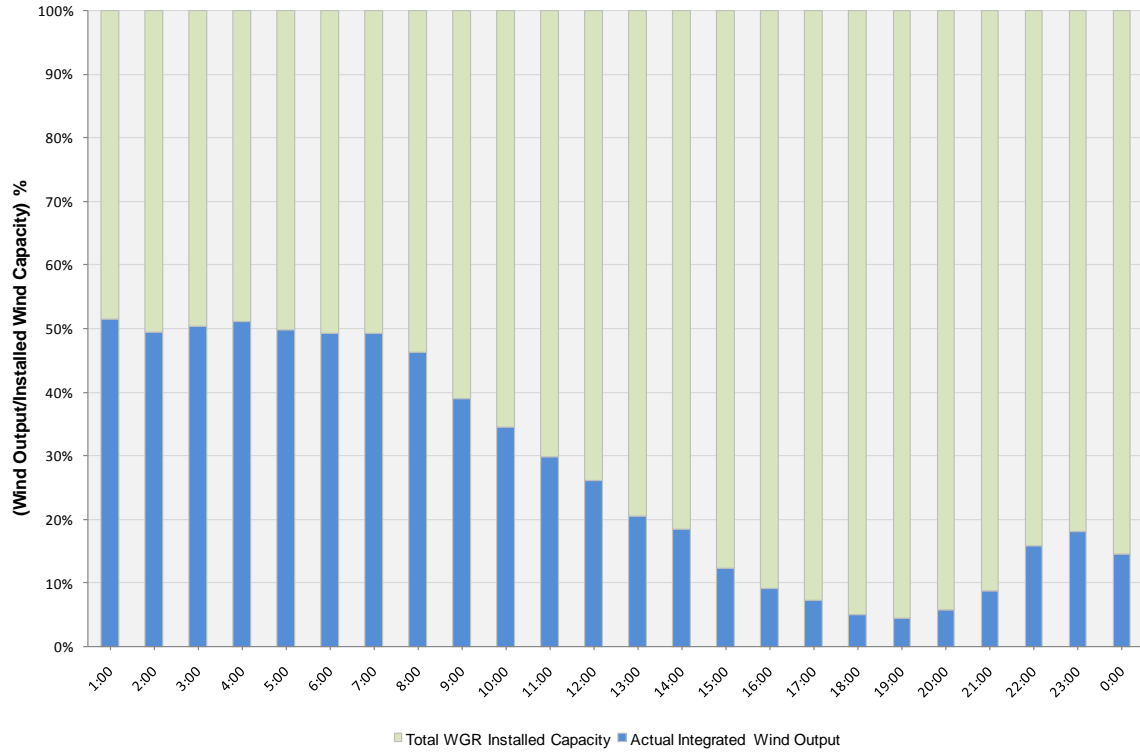
ERCOT Grid Operations Wind Integration Report: 12/31/10

Peak Load	33,268 MW
Load Peak Hour	19
Wind Record 12/11/10	7,227 MW
Max Wind Value	5,684 MW
Wind Peak Hour	00:44:00
Wind Integration %	22.14

Hourly Average Actual Load vs. Actual Wind Output
12-31-2010



Actual Wind Output as a Percentage of the Total Installed Wind Capacity
12-31-2010



Actual Wind Output as a Percentage of the ERCOT Load
12-31-2010

